



## NEBULA 11

The Nebula 11 is an IP54 rated range of hinged beveled downlighters. The Nebula 11 is available in white as standard and is ideal for secure unit environments.

### FEATURES

- Clear toughened safety glass in hinged bezel
- Option of either opal or clear polycarbonate cover
- Vandal resistant screws for hinged bezels supplied as standard with the product
- Dimmable versions available
- IP54 rated

### ORDER DETAILS

Order code	Description	Lamp Type and Rating				Gear	Weight (kg)
NE11HF118	Nebula 11	1x18W PLC				HF	1.73
NE11HF218	Nebula 11	2x18W PLC				HF	1.73
NE11HF142	Nebula 11	1x26W PLC	1x26W PLT	1x32W PLT	1x42W PLT	HF	1.73
NE11HF242	Nebula 11	2x26W PLC	2x26W PLT	2x32W PLT	2x42W PLT	HF	1.73

#### Suffix

OP	Opal Polycarbonate
CP	Clear Polycarbonate
DAL	Touch Dim (see accessory DC1PM) / Digital Addressable Lighting Interface (DALI)
DSI	Switch Dim (see accessory DC1PM) / Digital Signal Interface (DSI)
D	Analogue 1-10V dimming (see accessory DC/100)

#### Emergency Accessories

Must be ordered with luminaires. Emergency Accessories cannot be retrofitted.

NEBELC	Sustained Standard LED Emergency with Integral Head
NEBELALC	Sustained Self Test LED Emergency with Integral Head
NEBEADLC	Sustained DALI Addressable LED Emergency with Integral Head

#### Accessories

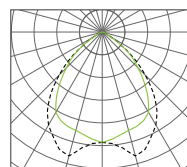
DC/100	Dimming Controller & Switch. Analogue 1-10V
DC1PM	Push to make switch for use with both Touch Dim and Switch Dim gear
VRS3-Driver	Vandal Resistant Driver T20 tamperproof TORX®

### TECH DETAILS

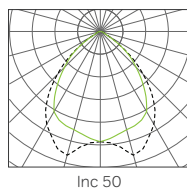
Gear High Frequency

Lamp Type  PLC

Lamp Type  PLT

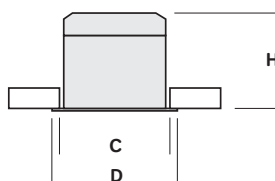


Photometrics	NE11HF218CP
DLOR	0.52
LOR	0.52
SHR NOM	1.50
SHR MAX	1.644
SHR MAX TRANS	1.803



Photometrics	NE11HF226CP
DLOR	0.50
LOR	0.50
SHR NOM	1.50
SHR MAX	1.644
SHR MAX TRANS	1.803

### DIMENSIONS



Dia	R	C (cut out)
237	209	222

### MATERIALS AND FINISHES

Body	Cast Aluminium Bezel
Controller	Hinged Bezel IP54
Finish	White

