



USER GUIDE



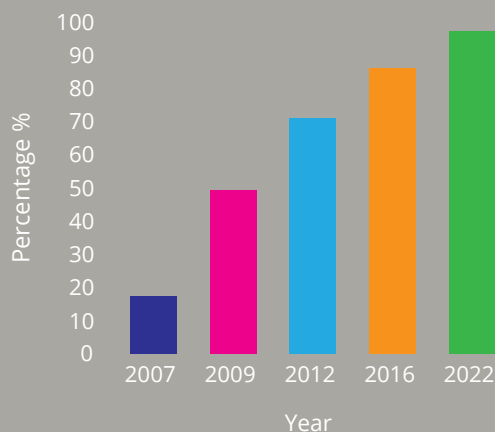


A PROMISING FUTURE...

BIM is more than just 3D design, it is a lifetime of collaborative data-rich modeling.

Its adoption has grown exponentially since its inception.

BIM Adoption Trend



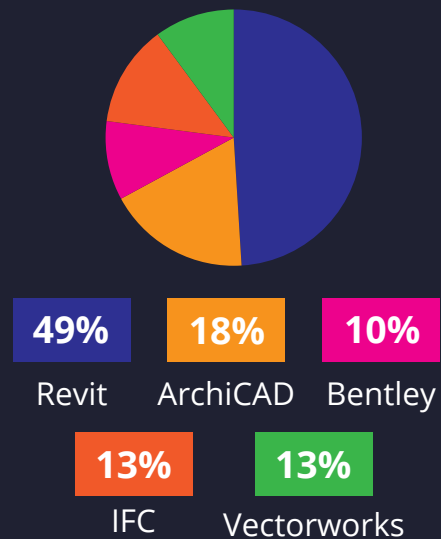
SOURCE: Geoff Zeiss – Former Autodesk - Geospatial blog.

WE LOVE COMPATIBILITY

After extensive research we decided to create all our BIM files in Autodesk Revit.

Most BIM operators use Revit which means they are compatible with multiple CAD formats.

BIM Software - Market Share %



@StephenHamilNBS – Article from Construction Code.

THE BIM SERVICE TEAM

For further information please contact bim@apollolighting.co.uk
or visit our BIM page at www.apollolighting.co.uk/bim/
T: 0113 240 5511

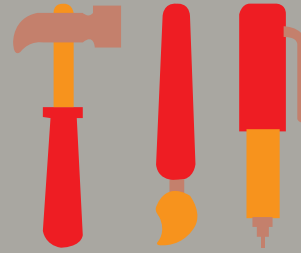
Our BIM Journey...

Following comprehensive investigations by our dedicated BIM Service Team for the perfect BIM package, we have created a formula suited to all end user requirements. Whether you are a specifier, designer, architect or engineer our BIM files will meet your expectations.



Gather Information

Enter a broad range of data into our extensive spreadsheets according to the CIBSIE standard template.



Modeling

The model is built in Revit, creating luminaire variants and linking up our spreadsheet data with the 3D model.



The fancy bit

The 3D model is tested for rendering purposes. This visualisation stage brings the product to life.

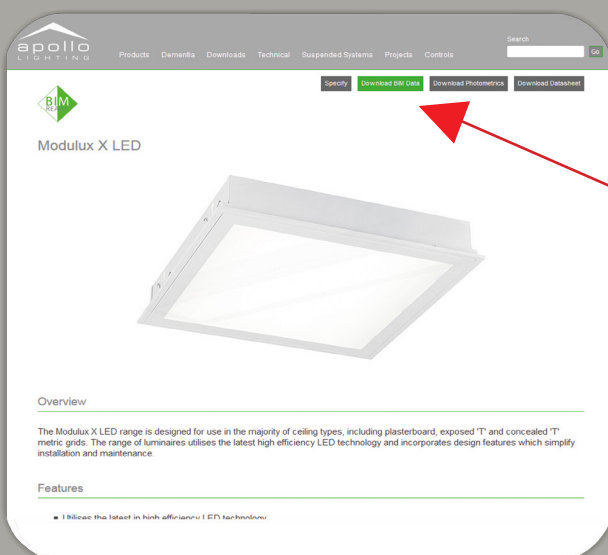


Packed & Ready

Once the model is complete and checked, it is packed up into a zip archive ready to download from our product pages !

THE BIM SERVICE TEAM

For further information please contact bim@apollolighting.co.uk
or visit our BIM page at www.apollolighting.co.uk/bim/
T: 0113 240 5511



Step 1:

Navigate to the product page you wish to download BIM files from and simply click on the 'Download BIM Data' to get started...

Step 2:

The next screen you will see is our data download disclaimer. Fill in the appropriate fields tick the 'I agree' box and you will be greeted by the download pop-up. These files are only useful if they are saved to your computer.

BIM Data Download

Our BIM data is provided free of charge and in good faith. However, you must accept the following terms and conditions, and provide valid contact details in order to access this data. Intentionally providing false information negates your license to acquire and use our data.

Apollo Lighting Ltd makes no representation or warranties, express or implied, with respect to the reuse of the information provided, regardless of its format or the means of its transmission. Apollo Lighting Ltd does not guarantee the accuracy, suitability or reliability of the information and accepts no liability for damages related to its use. The user accepts the information provided "as is", and assumes all risks associated with its use and agrees not to share this information with other parties.

Apollo Lighting Ltd reserves the right to make changes to any file without any prior notice and it is the responsibility of the user of the files to ensure the correct version is being used. Apollo Lighting Ltd can not be held responsible for any loss or damage arising from the use of any downloaded data.

The use of downloaded data files is limited to:

- your own personal use where that personal use is not for any commercial or profit making purpose; or
- for use by educational institutions and their students for educational purposes only; or
- for inclusion in any drawings or contract documents used or intended to be used in conjunction with a building contract where you are or may become a contracting party, or in connection with which you are engaged or may be engaged in the future by one of the contracting parties in a professional capacity.

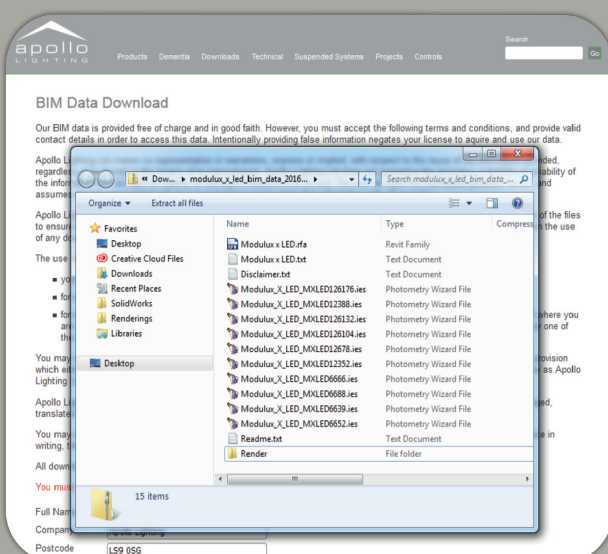
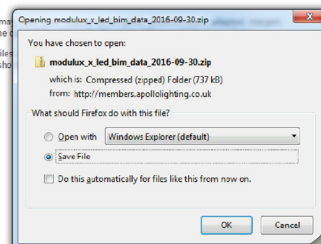
You may not use our content for the purpose of developing and/or maintaining for yourself or for others, an alternative service provision which either directly or indirectly competes with Apollo Lighting Ltd or in some other way serves the same or a similar purpose as Apollo Lighting Ltd.

Apollo Lighting Ltd take no responsibility for any files which may be translated, reverse engineered or in any way modified from the original files. Apollo Lighting Ltd does not accept any liability for any loss or damage arising from the use of any downloaded data. All downloaded data remains Copyright Apollo Lighting Ltd.

You must provide valid information

Full Name:
 Company:
 Postcode:
 Telephone:
 Email:

☒ I agree to the terms above



Step 3:

Once your download has completed. The file should be unzipped to its own folder. Once completed the file should look like this.

The folder includes;

2x Revit File (.rfa) (One for rendering in the 'Render' folder, one for data purposes)

Associated IES files

A text (.txt) file that links technical data to the 3D model.

BIM disclaimer

Readme text file for any hints or tips on using the product file.

THE BIM SERVICE TEAM

For further information please contact bim@apollolighting.co.uk or visit our BIM page at www.apollolighting.co.uk/bim/
 T: 0113 240 5511

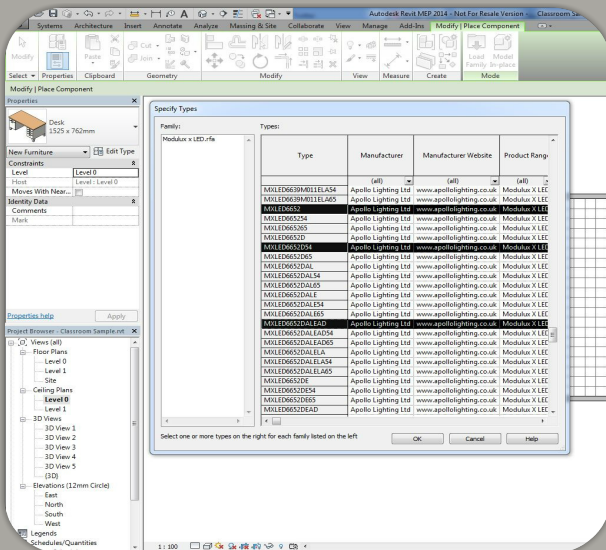
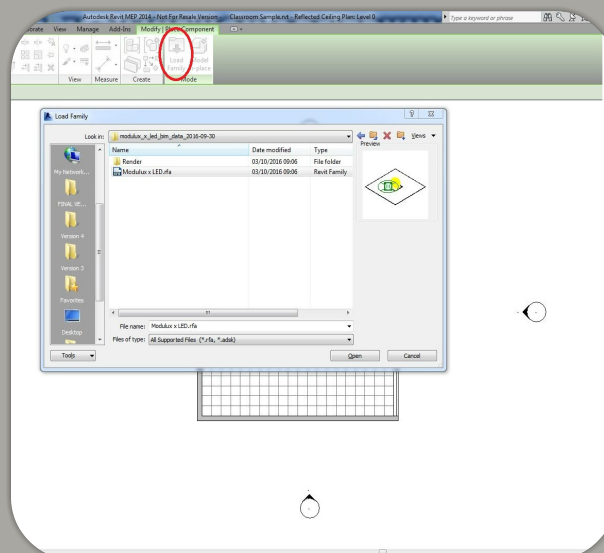
Step 4:

Load up an existing Revit project. Click on the 'Architecture' tab and then click on 'Component'.

Next go to the 'Modify' tab and click on 'Load Family' (circled).

Navigate to the location of your downloaded folder and click on the appropriate Revit Family (.rfa) file.

Click open.



Step 5:

When you click open to load your family into the project you will see the 'Specify Types' screen.

This is where you can choose the variations of the luminaire that you would like to work with.

To select the variation simply click the row. Hold 'Ctrl' and click for individual selections to avoid large quantities of variations.

Once you are happy with your selection click 'Ok'.

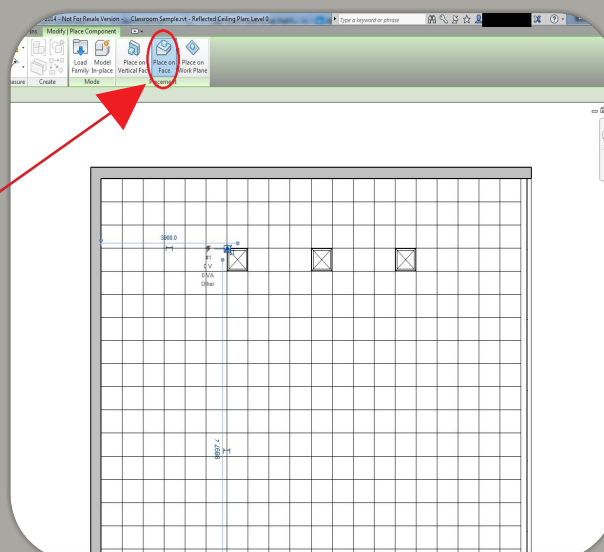
Step 6:

Placing the family into Revit is simple.

Load up the desired view.

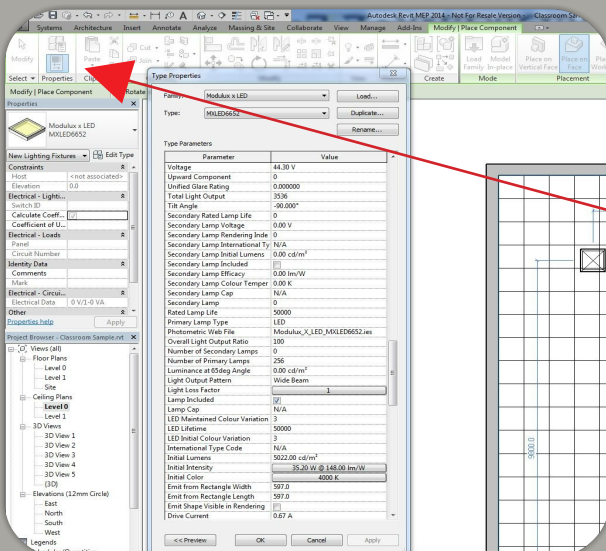
Go into the 'Modify' tab and click on 'Place on Face'.

You are now ready to add the luminaires onto a surface.



THE BIM SERVICE TEAM

For further information please contact bim@apollolighting.co.uk
or visit our BIM page at www.apollolighting.co.uk/bim/
T: 0113 240 5511



Step 7:

One of the great things about Apollo Lighting's BIM files is the sheer amount of data we incorporate into the models.

You can access all this information about your model/variation by just clicking on 'Type Properties'.

First click the luminaire and then click on 'Type Properties' in the 'Properties' section of the 'Modify' tab.

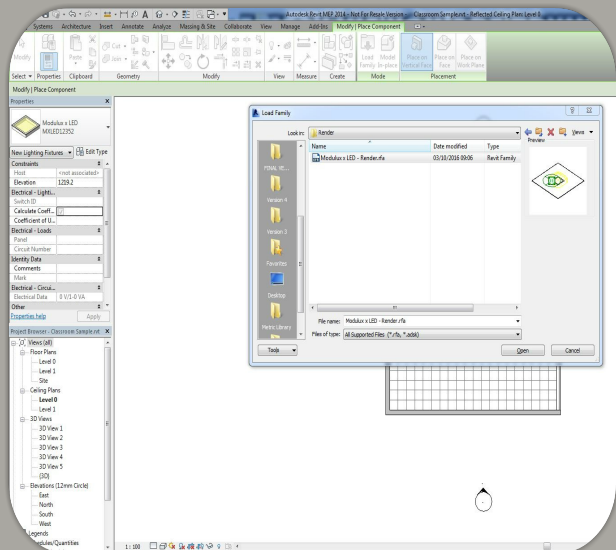
This will bring up what we see in this figure. You can also browse through different variations simply using the 'Type' drop down menu.

Step 8:

If however you want the BIM files more for visualisation than for data purposes then there is a special render file located in the 'Render' folder to give you a good representation every time.

To load in this version it is as easy as repeating steps 4 and 5 and choosing the 'luminaire name - render' file instead.

Once done click 'Open'



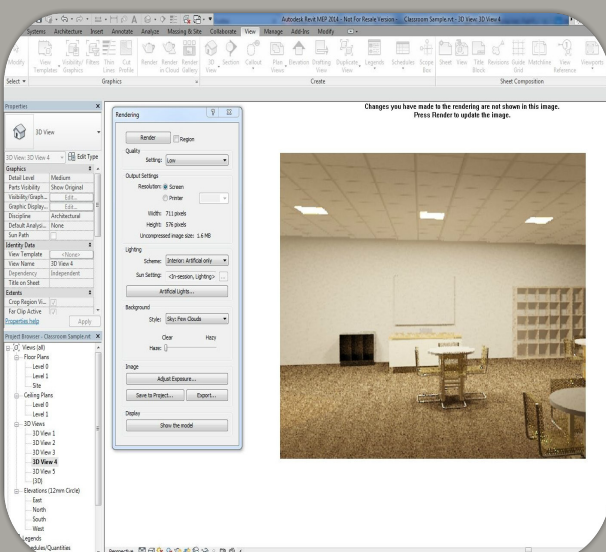
Step 9:

To render your luminaire, first make a 3D view using the 'Camera' function. Then click on the 'View' tab and under the 'Graphics' section click 'Render'.

You can then alter how you render the product with quality varying from 'Draft' to 'Best'. We recommend 'Medium' or above for best results but please be aware renders will vary depending on quality.

Make sure your artificial lights are on by clicking on the 'Artificial Lights.' button and checking the scheme involves 'Artificial Light'.

Once this is done you are ready to render. Click 'Render' at the top. Don't be alarmed if yours comes out differently as experimentation with 'Exposure Settings' will be sure to fix this.



THE BIM SERVICE TEAM

For further information please contact bim@apollolighting.co.uk
or visit our BIM page at www.apollolighting.co.uk/bim/
T: 0113 240 5511



THE BIM SERVICE TEAM

For further information please contact bim@apollolighting.co.uk
or visit our BIM page at www.apollolighting.co.uk/bim/
T: 0113 240 5511



T: +44 (0) 113 240 5511	Apollo Lighting Ltd
F: +44 (0) 113 240 5151	Unit D9
W: www.apollolighting.co.uk	Cross Green Approach
	Leeds
sales@apollolighting.co.uk	LS9 0SG
technical@apollolighting.co.uk	United Kingdom

Apollo Lighting Ltd is registered in England and Wales. No. 1518386