



Sample Isolux Plots

EDUCATION





Sample Isolux Plot General Lighting

GENED33V

Genius Education System comprising:
 9 x VFLEED35DAL and 8m leads for LCM
 1 x Lighting Control Module
 1 x ASENS-C6MW-PRO and 10m lead for LCM

&

GENED33VE

Genius Education System comprising:
 7 x VFLEED35DAL and 8m leads for LCM
 2 x VFLEED35DALE and 8m leads for LCM
 1 x Lighting Control Module
 1 x ASENS-C6MW-PRO and 10m lead for LCM

Summary

Height of Room: 2.700m, Mounting Height: 2.700m, Maintenance factor: 0.85 Values in Lux

| Surface | p[%] | E_{av} [lx] | E_{min} [lx] | E_{max} [lx] | u0 |
|-----------|------|---------------|----------------|----------------|-------|
| Workplane | / | 360 | 257 | 436 | 0.713 |
| Floor | 20 | 289 | 159 | 363 | 0.550 |
| Ceiling | 70 | 64 | 37 | 88 | 0.575 |
| Walls (4) | 42 | 184 | 57 | 301 | / |

| Workplane: | UGR | Lengthways- | Across | to luminaire axis |
|-----------------------|--------------------|-------------|--------|-------------------|
| Height: 0.750m | Left Wall | 21 | 18 | |
| Grid: 32 x 32 Points | Lower Wall | 21 | 18 | |
| Boundary Zone: 0.500m | (CIE, SHR = 1.00.) | | | |

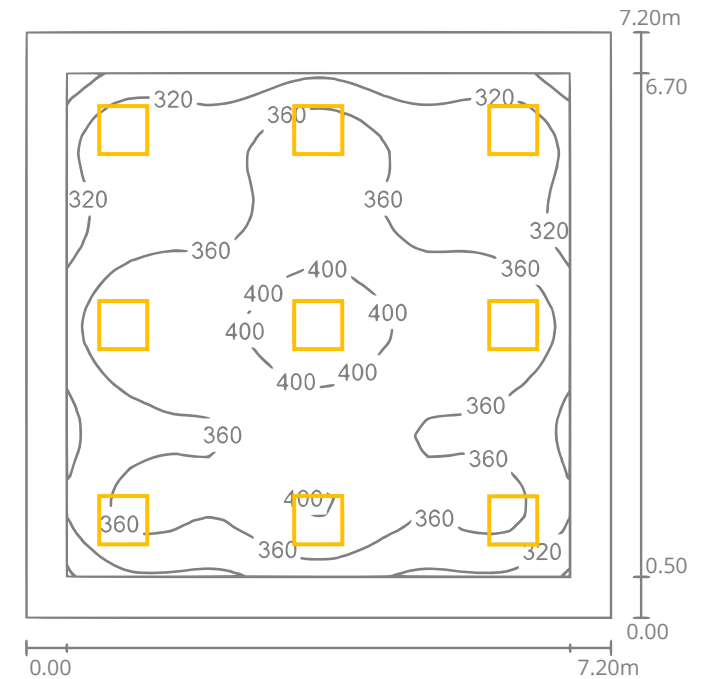
Illuminance Quotient (according to LG7): Walls / Working Plane: 0.535,
 Ceiling / Working Plane: 0.177.

Luminaire Parts List

| No. | Pieces | Designation (Correction Factor) | Φ (Luminaire) [lm] | Φ (Lamps) [lm] | P [W] |
|-----|--------|-----------------------------------|-------------------------|---------------------|-------|
| 1 | 9 | Apollo Lighting Ltd VFLEED35DAL/E | 2808 | 2808 | 25.1 |
| | | Vision Flare LED 3500lm (1.000) | | | |
| | | | Total: 25271 | Total: 25272 | 225.9 |

Specific connected load: $4.36 \text{ W/m}^2 = 1.21 \text{ W/m}^2/100 \text{ lx}$ (Ground area: 51.84 m^2)

Isolux Plot





Sample Isolux Plot Emergency Lighting

GENED33VE

Genius Education System comprising:
 7 x VFLEED35DAL and 8m leads for LCM
 2 x VFLEED35DALE and 8m leads for LCM
 1 x Lighting Control Module
 1 x ASENS-C6MW-PRO and 10m lead for LCM

Summary

Height of Room: 2.700m, Mounting Height: 2.700m, Maintenance factor: 0.85

| Surface | p[%] | E_{av} [lx] | E_{min} [lx] | E_{max} [lx] | u0 |
|-----------|------|---------------|----------------|----------------|-------|
| Workplane | / | 3.16 | 0.56 | 8.08 | 0.177 |
| Floor | 0 | 3.10 | 0.41 | 8.09 | 0.131 |
| Ceiling | 0 | 0.00 | 0.00 | 0.00 | 0.000 |
| Walls (4) | 0 | 2.27 | 0.01 | 14 | / |

Workplane:

Height: 0.000m

Grid: 64 x 64 Points

Boundary Zone: 0.500m

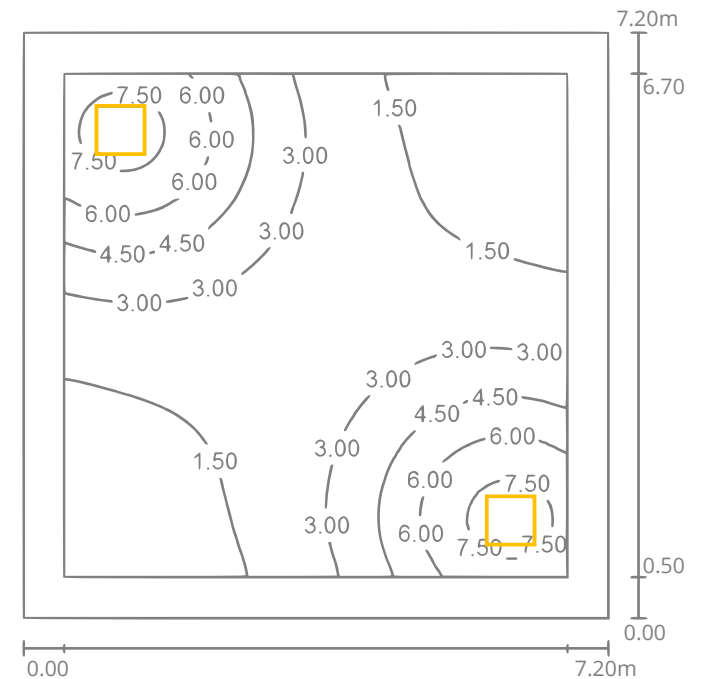
Illuminance Quotient (according to LG7): Walls / Working Plane: 0.711, Ceiling / Working Plane: 0.000.

Luminaire Parts List

| No. | Pieces | Designation (Correction Factor) | Φ (Luminaire) [lm] | Φ (Lamps) [lm] | P [W] |
|-----|--------|----------------------------------|-------------------------|---------------------|-------|
| 1 | 2 | Apollo Lighting Ltd VFLEED35DALE | 198 | 198 | 25.1 |
| | | Vision Flare LED 3500lm (1.000) | | | |
| | | | Total: 396 | Total: 396 | 50.2 |

Specific connected load: $0.97 \text{ W/m}^2 = 30.62 \text{ W/m}^2/100 \text{ lx}$ (Ground area: 51.84 m^2)

Isolux Plot





Sample Isolux Plot General Lighting

GENED33A

Genius Education System comprising:
 9 x ALLED444DAL and 8m leads for LCM
 1 x Lighting Control Module
 1 x ASENS-C6MW-PRO and 10m lead for LCM

&

GENED33AE

Genius Education System comprising:
 7 x ALLED444DAL and 8m leads for LCM
 2 x ALLED444DALE and 8m leads for LCM
 1 x Lighting Control Module
 1 x ASENS-C6MW-PRO and 10m lead for LCM

Summary

Height of Room: 2.700m, Mounting Height: 2.700m, Maintenance factor: 0.85 Values in Lux

| Surface | p[%] | E_{av} [lx] | E_{min} [lx] | E_{max} [lx] | u0 |
|-----------|------|---------------|----------------|----------------|-------|
| Workplane | / | 409 | 292 | 484 | 0.714 |
| Floor | 20 | 327 | 192 | 407 | 0.587 |
| Ceiling | 70 | 139 | 58 | 1030 | 0.415 |
| Walls (4) | 42 | 243 | 119 | 377 | / |

| Workplane: | UGR | Lengthways- | Across | to luminaire axis |
|----------------|----------------|--------------------|--------|-------------------|
| Height: | 0.750m | Left Wall | 22 | 20 |
| Grid: | 64 x 64 Points | Lower Wall | 22 | 20 |
| Boundary Zone: | 0.500m | (CIE, SHR = 1.00.) | | |

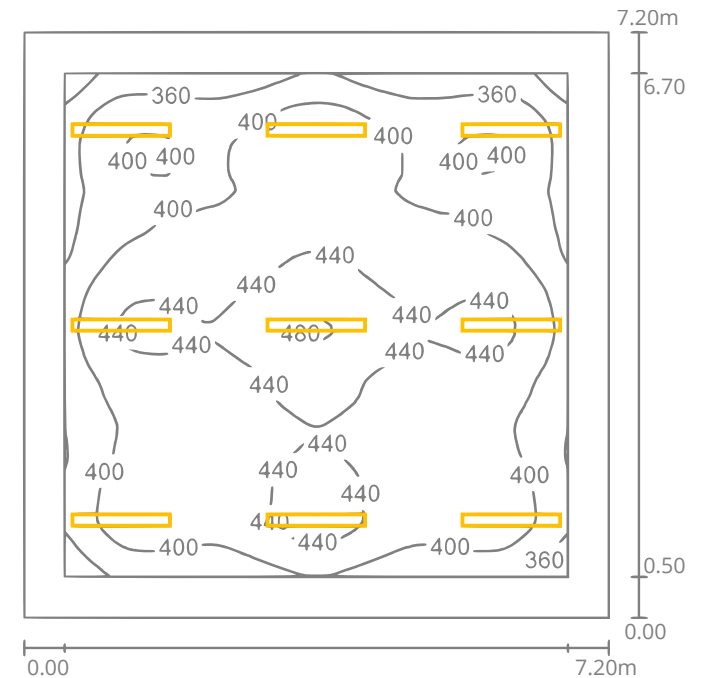
Illuminance Quotient (according to LG7): Walls / Working Plane: 0.638,
 Ceiling / Working Plane: 0.341.

Luminaire Parts List

| No. | Pieces | Designation (Correction Factor) | Φ (Luminaire) [lm] | Φ (Lamps) [lm] | P [W] |
|-----|--------|-----------------------------------|-------------------------|---------------------|-------|
| 1 | 9 | Apollo Lighting Ltd ALLED444DAL/E | 3608 | 3608 | 31.9 |
| | | Altair Curve LED 4400lm (1.000) | | | |
| | | | Total: 32471 | Total: 32472 | 287.1 |

Specific connected load: $5.54 \text{ W/m}^2 = 1.35 \text{ W/m}^2/100 \text{ lx}$ (Ground area: 51.84 m^2)

Isolux Plot





Sample Isolux Plot Emergency Lighting

GENED33AE

Genius Education System comprising:
 7 x ALLED444DAL and 8m leads for LCM
 2 x ALLED444DALE and 8m leads for LCM
 1 x Lighting Control Module
 1 x ASENS-C6MW-PRO and 10m lead for LCM

Summary

Height of Room: 2.700m, Mounting Height: 2.700m, Maintenance factor: 0.85

| Surface | p[%] | E_{av} [lx] | E_{min} [lx] | E_{max} [lx] | u0 |
|-----------|------|---------------|----------------|----------------|-------|
| Workplane | / | 3.99 | 0.77 | 9.95 | 0.194 |
| Floor | 0 | 3.91 | 0.56 | 9.97 | 0.144 |
| Ceiling | 0 | 1.19 | 0.01 | 83 | 0.004 |
| Walls (4) | 0 | 3.50 | 0.21 | 18 | / |

Workplane:

Height: 0.000m

Grid: 64 x 64 Points

Boundary Zone: 0.500m

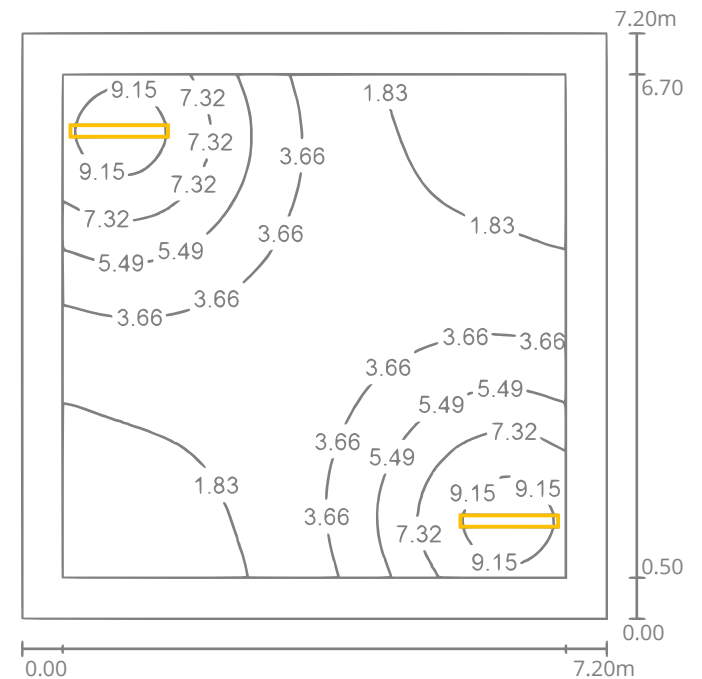
Illuminance Quotient (according to LG7): Walls / Working Plane: 0.875, Ceiling / Working Plane: 0.298.

Luminaire Parts List

| No. | Pieces | Designation (Correction Factor) | Φ (Luminaire) [lm] | Φ (Lamps) [lm] | P [W] |
|-----|--------|----------------------------------|-------------------------|---------------------|-------|
| 1 | 2 | Apollo Lighting Ltd ALLED444DALE | 316 | 316 | 31.9 |
| | | Altair Curve LED 4400lm (1.000) | | | |
| | | | Total: 632 | Total: 632 | 63.8 |

Specific connected load: $1.23 \text{ W/m}^2 = 30.83 \text{ W/m}^2/100 \text{ lx}$ (Ground area: 51.84 m^2)

Isolux Plot





Sample Isolux Plot General Lighting

GENED34V

Genius Education System comprising:
12 x VFLEED35DAL and 8m leads for LCM
1 x Lighting Control Module
1 x ASENS-C6MW-PRO and 10m lead for LCM

&

GENED34VE

Genius Education System comprising:
9 x VFLEED35DAL and 8m leads for LCM
3 x VFLEED35DALE and 8m leads for LCM
1 x Lighting Control Module
1 x ASENS-C6MW-PRO and 10m lead for LCM

Summary

Height of Room: 2.700m, Mounting Height: 2.700m, Maintenance factor: 0.85

| Surface | p[%] | E_{av} [lx] | E_{min} [lx] | E_{max} [lx] | u0 |
|-----------|------|---------------|----------------|----------------|-------|
| Workplane | / | 371 | 261 | 447 | 0.703 |
| Floor | 20 | 305 | 167 | 381 | 0.546 |
| Ceiling | 70 | 65 | 44 | 86 | 0.685 |
| Walls (4) | 41 | 189 | 57 | 302 | / |

| Workplane: | UGR | Lengthways- | Across | to luminaire axis |
|----------------|----------------|--------------------|--------|-------------------|
| Height: | 0.750m | Left Wall | 21 | 19 |
| Grid: | 32 x 32 Points | Lower Wall | 21 | 19 |
| Boundary Zone: | 0.500m | (CIE, SHR = 1.00.) | | |

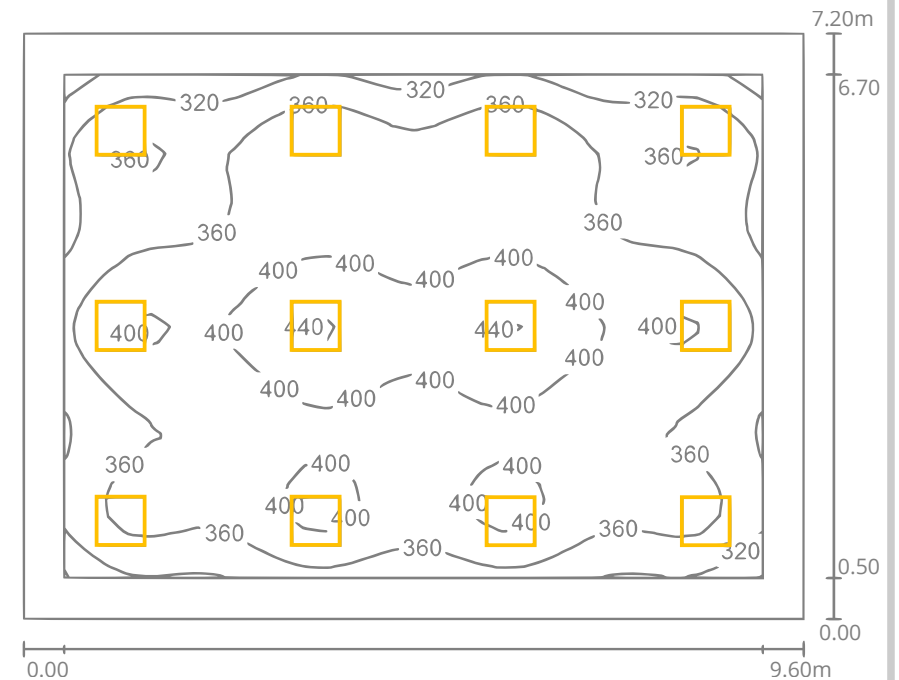
Illuminance Quotient (according to LG7): Walls / Working Plane: 0.526,
Ceiling / Working Plane: 0.174.

Luminaire Parts List

| No. | Pieces | Designation (Correction Factor) | Φ (Luminaire) [lm] | Φ (Lamps) [lm] | P [W] |
|-----|--------|-----------------------------------|-------------------------|---------------------|-------|
| 1 | 12 | Apollo Lighting Ltd VFLEED35DAL/E | 2808 | 2808 | 25.1 |
| | | Vision Flare LED 3500lm (1.000) | | | |
| | | | Total: 33695 | Total: 33696 | 301.2 |

Specific connected load: $4.36 \text{ W/m}^2 = 1.17 \text{ W/m}^2/100 \text{ lx}$ (Ground area: 69.12 m^2)

Isolux Plot





Sample Isolux Plot Emergency Lighting

GENED34VE

Genius Education System comprising:
 9 x VFLLED35DAL and 8m leads for LCM
 3 x VFLLED35DALE and 8m leads for LCM
 1 x Lighting Control Module
 1 x ASENS-C6MW-PRO and 10m lead for LCM

Summary

Height of Room: 2.700m, Mounting Height: 2.700m, Maintenance factor: 0.85

| Surface | p[%] | E_{av} [lx] | E_{min} [lx] | E_{max} [lx] | u0 |
|-----------|------|---------------|----------------|----------------|-------|
| Workplane | / | 4.38 | 1.42 | 8.53 | 0.324 |
| Floor | 0 | 4.13 | 0.94 | 8.55 | 0.227 |
| Ceiling | 0 | 0.00 | 0.00 | 0.00 | 0.000 |
| Walls (4) | 0 | 2.42 | 0.03 | 14 | / |

Workplane:

Height: 0.000m
 Grid: 64 x 64 Points
 Boundary Zone: 0.500m

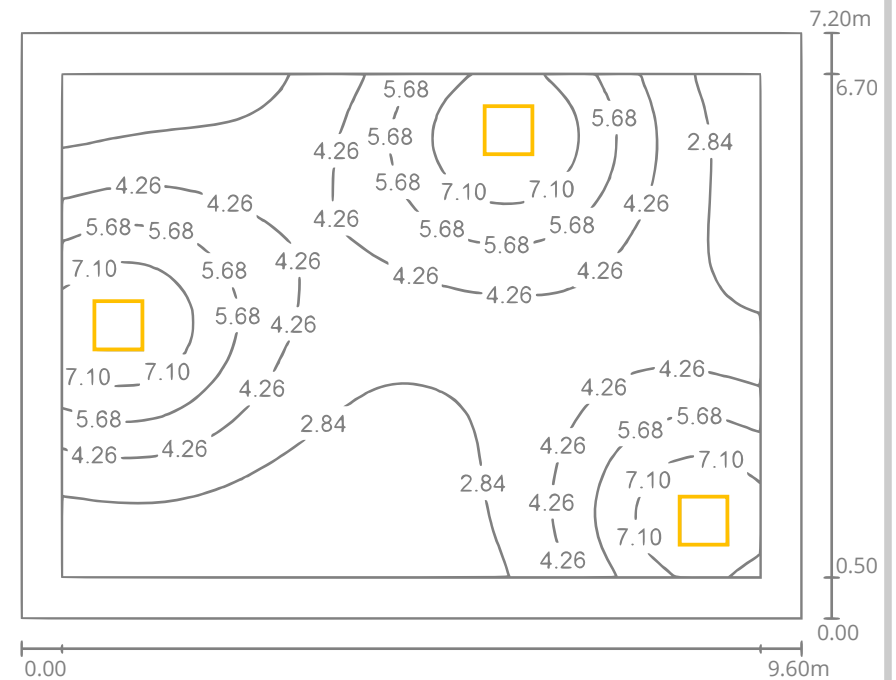
Illuminance Quotient (according to LG7): Walls / Working Plane: 0.550, Ceiling / Working Plane: 0.000.

Luminaire Parts List

| No. | Pieces | Designation (Correction Factor) | Φ (Luminaire) [lm] | Φ (Lamps) [lm] | P [W] |
|-----|--------|----------------------------------|-------------------------|---------------------|-------|
| 1 | 3 | Apollo Lighting Ltd VFLLED35DALE | 198 | 198 | 25.1 |
| | | Vision Flare LED 3500lm (1.000) | | | |
| | | | Total: 594 | Total: 594 | 75.3 |

Specific connected load: $1.09 \text{ W/m}^2 = 24.86 \text{ W/m}^2/100 \text{ lx}$ (Ground area: 69.12 m^2)

Isolux Plot





Sample Isolux Plot General Lighting

GENED34A

Genius Education System comprising:
12 x ALLED444DAL and 8m leads for LCM
1 x Lighting Control Module
1 x ASENS-C6MW-PRO and 10m lead for LCM

&

GENED34AE

Genius Education System comprising:
9 x ALLED444DAL and 8m leads for LCM
3 x ALLED444DALE and 8m leads for LCM
1 x Lighting Control Module
1 x ASENS-C6MW-PRO and 10m lead for LCM

Summary

Height of Room: 2.700m, Mounting Height: 2.700m, Maintenance factor: 0.85

| Surface | p[%] | E_{av} [lx] | E_{min} [lx] | E_{max} [lx] | u0 |
|-----------|------|---------------|----------------|----------------|-------|
| Workplane | / | 422 | 294 | 497 | 0.697 |
| Floor | 20 | 345 | 200 | 423 | 0.580 |
| Ceiling | 70 | 142 | 62 | 1032 | 0.436 |
| Walls (4) | 41 | 254 | 124 | 385 | / |

| Workplane: | UGR | Lengthways- | Across | to luminaire axis |
|-----------------------|--------------------|-------------|--------|-------------------|
| Height: 0.750m | Left Wall | 23 | 21 | |
| Grid: 64 x 64 Points | Lower Wall | 22 | 21 | |
| Boundary Zone: 0.500m | (CIE, SHR = 1.00.) | | | |

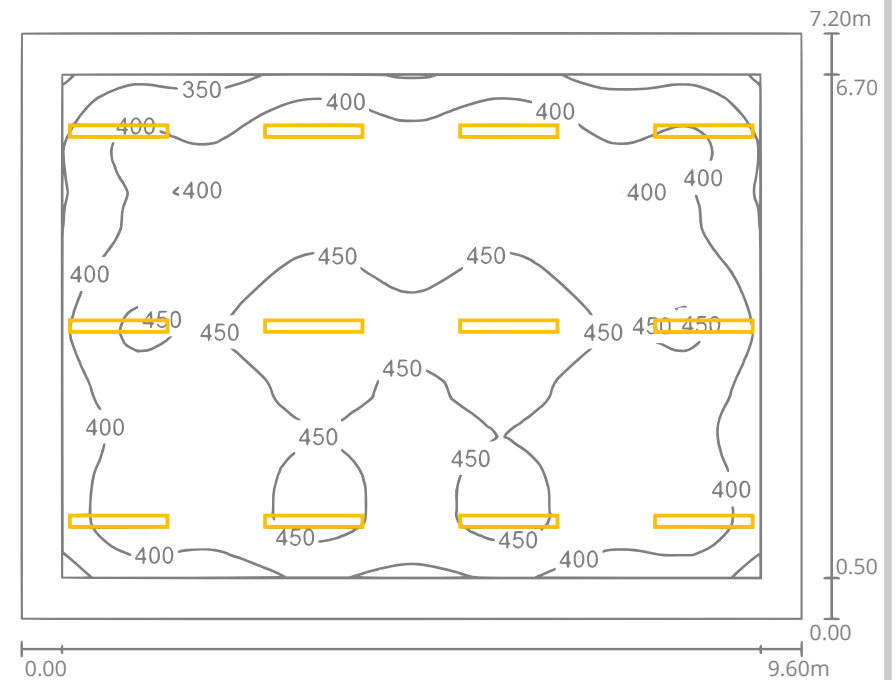
Illuminance Quotient (according to LG7): Walls / Working Plane: 0.645,
Ceiling / Working Plane: 0.336.

Luminaire Parts List

| No. | Pieces | Designation (Correction Factor) | Φ (Luminaire) [lm] | Φ (Lamps) [lm] | P [W] |
|-----|--------|-----------------------------------|-------------------------|---------------------|-------|
| 1 | 12 | Apollo Lighting Ltd ALLED444DAL/E | 3608 | 3608 | 31.9 |
| | | Altair Curve LED 4400lm (1.000) | | | |
| | | | Total: 43294 | Total: 43296 | 382.8 |

Specific connected load: $5.54 \text{ W/m}^2 = 1.31 \text{ W/m}^2/100 \text{ lx}$ (Ground area: 69.12 m^2)

Isolux Plot





Sample Isolux Plot Emergency Lighting

GENED34AE

Genius Education System comprising:
 9 x ALLED444DAL and 8m leads for LCM
 3 x ALLED444DALE and 8m leads for LCM
 1 x Lighting Control Module
 1 x ASENS-C6MW-PRO and 10m lead for LCM

Summary

Height of Room: 2.700m, Mounting Height: 2.700m, Maintenance factor: 0.85

| Surface | p[%] | E_{av} [lx] | E_{min} [lx] | E_{max} [lx] | u0 |
|-----------|------|---------------|----------------|----------------|-------|
| Workplane | / | 5.47 | 1.81 | 11 | 0.332 |
| Floor | 0 | 5.17 | 1.40 | 11 | 0.271 |
| Ceiling | 0 | 1.39 | 0.01 | 84 | 0.006 |
| Walls (4) | 0 | 3.90 | 0.34 | 19 | / |

Workplane:

Height: 0.000m
 Grid: 64 x 64 Points
 Boundary Zone: 0.500m

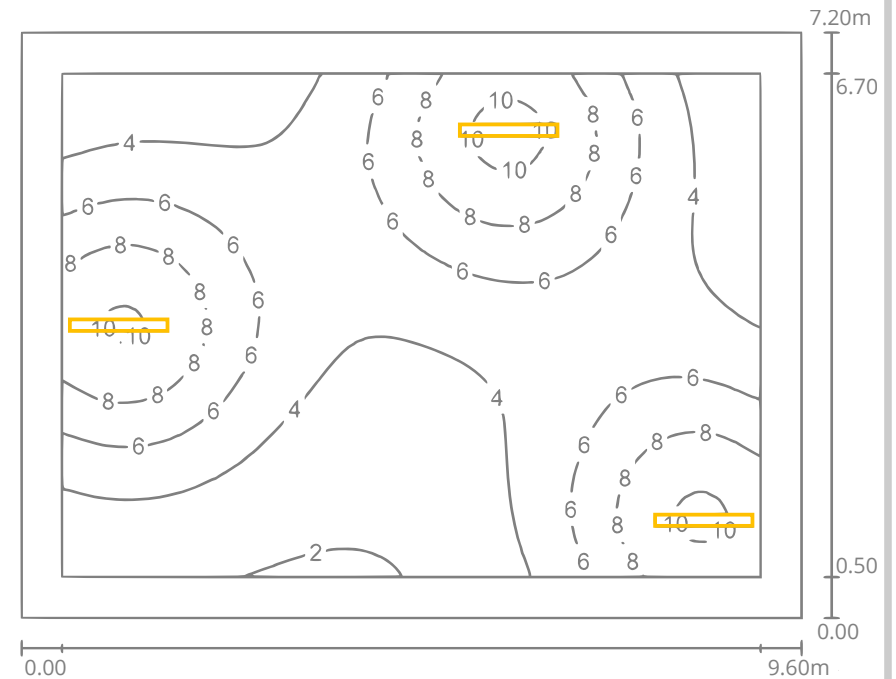
Illuminance Quotient (according to LG7): Walls / Working Plane: 0.711, Ceiling / Working Plane: 0.254.

Luminaire Parts List

| No. | Pieces | Designation (Correction Factor) | Φ (Luminaire) [lm] | Φ (Lamps) [lm] | P [W] |
|-----|--------|----------------------------------|-------------------------|---------------------|-------|
| 1 | 3 | Apollo Lighting Ltd ALLED444DALE | 316 | 316 | 31.9 |
| | | Altair Curve LED 4400lm (1.000) | | | |
| | | | Total: 948 | Total: 948 | 95.7 |

Specific connected load: $1.38 \text{ W/m}^2 = 25.31 \text{ W/m}^2/100 \text{ lx}$ (Ground area: 69.12 m^2)

Isolux Plot





T: +44 (0)113 240 5511
F: +44 (0)113 240 5151

W: www.apollolighting.co.uk
sales@apollolighting.co.uk
technical@apollolighting.co.uk

Apollo Lighting Ltd
Unit D9
Cross Green Approach
Leeds
LS9 0SG
United Kingdom

Apollo Lighting Ltd is registered in England and Wales, No. 1518386 and is VAT registered, No. 417911845